



EcoStruxure™ Security Expert

Cybersecurity Features

Presented by: Dimitar Mankov

Date: September 2018

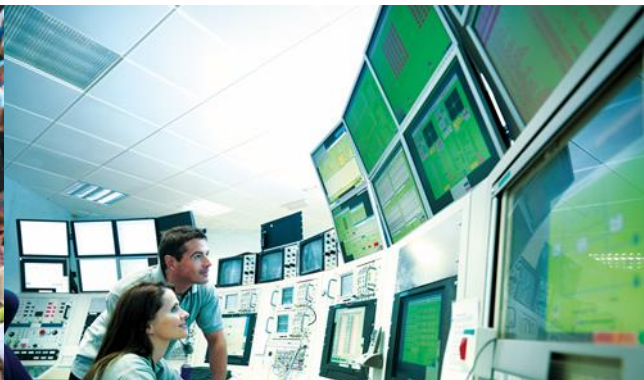
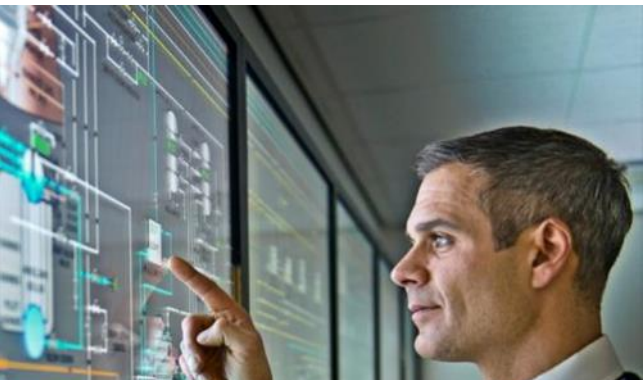
**EcoXpert™**

Confidential Property of Schneider Electric

Life Is On

**Schneider
Electric**

Today, data breaches are a major concern



Digitization

Number of connected devices in buildings

1.7bn

2014

5.5bn



2020

World Urban Population



+2.5bn

2014 - 2050

Data Breaches

Cybersecurity incidents growing annually

+40%

In 2016

Consider what is in your Care, Custody and Control



Assets

Replaceable, non-replaceable – buildings and content, historic

Controlled substances – biohazards, pharmaceuticals

Reputation



Sensitive Information

Intellectual property

Financial data

Personal information – credit cards, identification



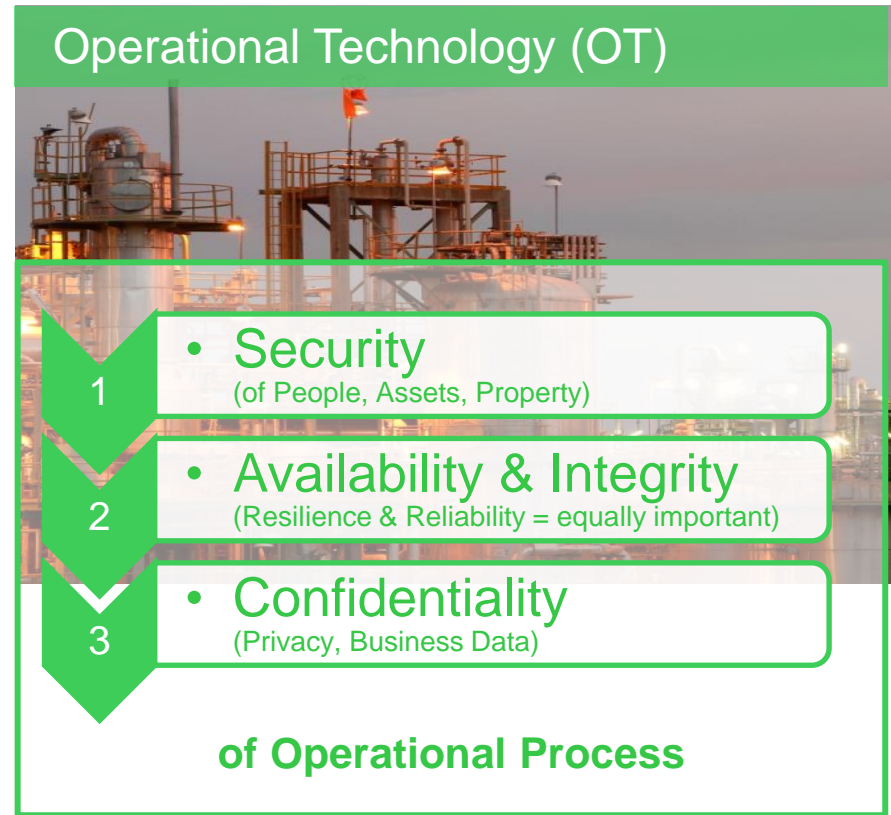
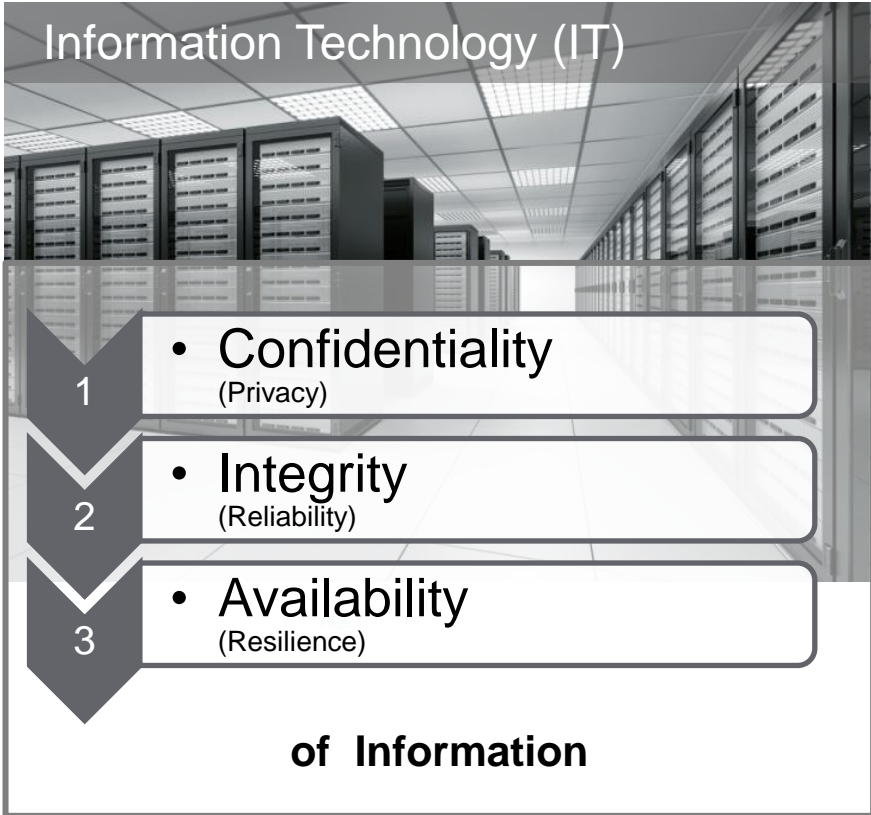
People

Staff, students, visitors – crime, terrorism, environmental dangers



Cybersecurity priorities differ in IT & OT environments

Physical Access Control is within an OT environment, while Identity Management remains IT responsibility



Cybersecurity features today

At or above market level

Secure Development Lifecycle (SDL) policy

- Processes assure resilience and formal customer response

Advanced encryption and authentication

- Secure communications throughout system (NIST certification)

Secure by default features

- Assure out-of-the-box protection

IT system integration

- Enable IT management of user and password policies
- Enable IT monitoring of system events

Full system backup, recovery and reconstitution

- Minimize downtime

Technology highlights :

- TLS 1.2 support
- CA Certificates
- Secure email
- Password policies
- Change password on first use
- Auto logoff timers
- Role-based access control (RBAC)
- Object level security
- Active Directory integration
- Audit logs
- System information and event monitoring (SIEM) integration

Addressing Security across the entire lifecycle means:

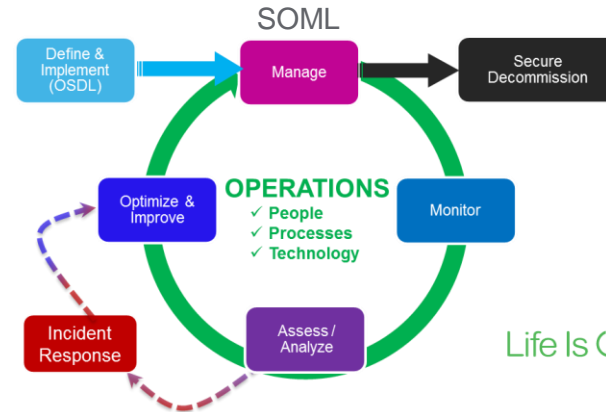
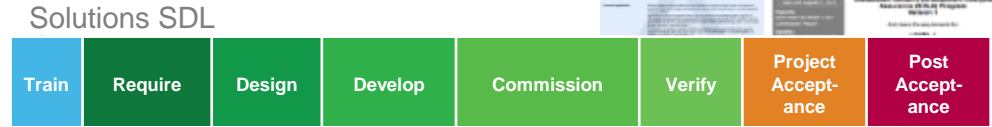
Secure Development Lifecycle (SDL/OSDL)

- We Develop Cyber Resilient Products
- We Design Cyber Resilient Architectures
- We Provide Cyber Resilient Solutions
- We Deploy our Products & Projects following Security Best Practices



Secure Operations Management Lifecycle

- Responsibility of the system owner/end user
- We offer Cybersecurity Services* to Manage the security of the system throughout its operational lifecycle
- We follow security best practices when maintaining the system



Cybersecurity assessment and implementation

Cybersecurity Lifecycle



Customers are asking...

Q: "Where do I start?"

A: Assessment and Planning

Q: "How do I get there?"

A: Development and Design

Q: "Who will Deliver it?"

A: Implementation

Q: "How do I maintain it?"

A: Management and Optimization

Cybersecurity Consulting

Assessment & Planning

Cybersecurity team reviews the current or new network, identifies any problems or issues, and suggests areas for improvement.

Development of Architecture & Design

Using an assessment or plan as a guideline, Cybersecurity team identifies what needs to be implemented and develops the detailed designs based on the required Cybersecurity Cornerstones.

Remediation & Implementation

Cybersecurity team takes the network design and turns it into reality through the procurement, staging, and commissioning of the client's new or system upgrades.

Manage & Optimization

Cybersecurity Services works closely with the management of the network, providing a mechanism to improve and optimize the continuously changing landscape of network usage.

Cybersecurity Cornerstones

- 1. Asset Identification**
Identify what is Critical to the Process
- 2. Electronic Access Controls**
Firewall Network Segmentation
- 3. User Access Controls**
Least Privilege Methodology for Users
- 4. Patching**
OS and Software
- 5. Anti Virus / Whitelisting**
Advanced malware technologies
- 6. Disaster Recovery**
Backup & Recovery Planning
- 7. Logging**
Capturing Windows Events & Syslog Events

Schneider Electric Cybersecurity Solutions Team utilizes their Life Cycle Methodology to develop a comprehensive Defense in Depth solution that address your specific cyber security requirements

Customer acceptance

Schneider Electric provides assurance end-to-end ...

- **Project requirement surveys** – we have experts on staff to provide answers
- **Formal letters** – stating readiness / SDL process / roadmap commitments
- **Integration services** – Able to provide consulting and assistance to reduce risk

We collaborate with your IT staff to produce secure solution ...

- **Secure solution design**
- **Compliance** - with your processes, policies and regulations
- **Secure installation and operation**



Life Is On

Schneider
Electric

**EcoXpert**[™]

Boston ONE Campus
800 Federal Street
Andover, MA USA
Phone: +1 978 794 0800

www.schneider-electric.com